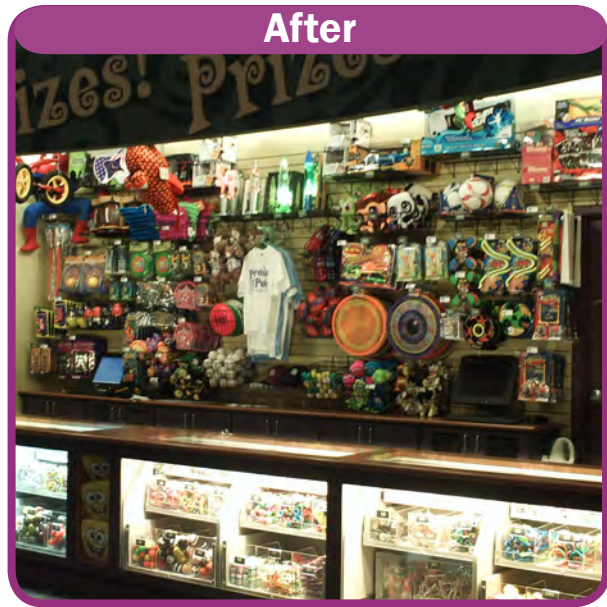




Before



After

- **Display large plush at the top of the counter as a focal point.**



- **Feature a wide selection of items at varying price points.**
- **Incorporate baskets and shelves as well as hooks to accommodate different types of merchandise.**

- **Restock the redemption area at the end of every shift.**

Your redemption display is one of the last things your customer sees as they leave your facility. It's important to make it a great experience so they'll keep coming back.

For more details, watch our video *How to Merchandise a Redemption Center*, and webinar, *A More Detailed Look at Merchandising a Redemption Counter*, both of which can be found at RedemptionUniversity.com.



Visit us online at RedemptionPlus.com or call 888.564.7587